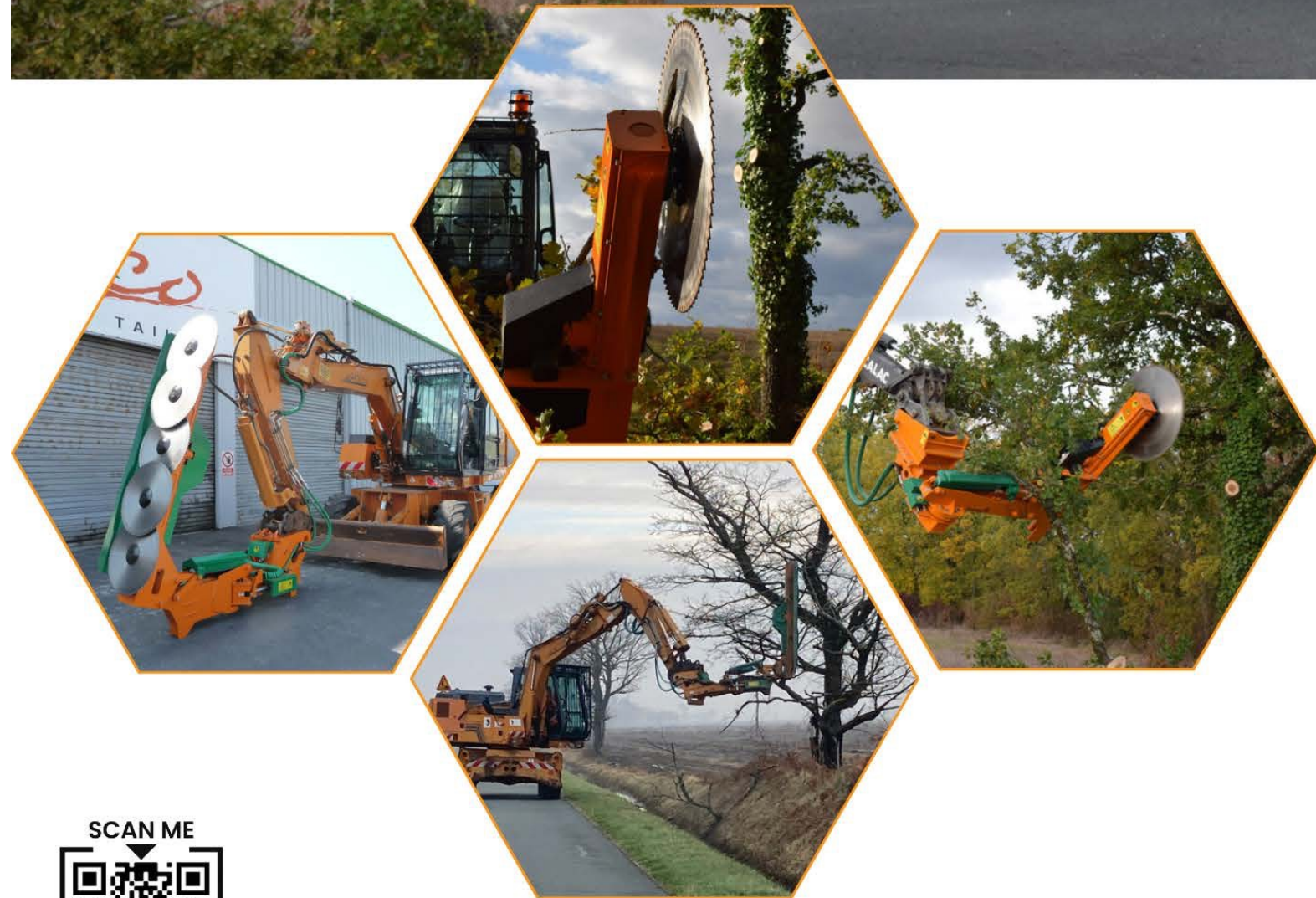


METEOR

P180



SCAN ME



Excavator mounting from 12 Tons

References	METEOR	Nbr of saw blades – knife plates / diam. (mm)	Cutting capacity (mm)	Cutting length (m)	Weight (kg) Without hitching	£
MP180.G90.4700.11	P180 LAMIER 4700	4 saw blades / Ø700	Ø240/Ø25	2.20	750	£26,581
MP180.G90.5700.11	P180 LAMIER 5700	5 saw blades / Ø700	Ø240/Ø25	2.65	810	£28,699
MP180.G90.1900.11	P180 LAMIER 1900	1 saw blade / Ø900	Ø500/Øn.a.	0.90	720	£26,888
MP180.G90.2900.11	P180 LAMIER 2900	2 saw blades / Ø900	Ø500/Øn.a.	1.55	760	£27,754

METEOR P180 RIGHT OR LEFT (to indicate at order)

METEOR P180 :

* Chassis with a pierced plate, predisposed to receive the hitching bracket between the pruning equipment and the excavator (**Hitching not included**)

* An offset arm to position itself 90° to the right or the left (to be specify at order) actuated by double effect cylinder

* A sheet metal support arm for working horizontally or vertically activated by double effect cylinder

* Cutting equipment type **700 / 900 diameter**, to be choose (on the table above)

* **Hydraulic kit** composed of:

- > Function selector on the chassis for piloting the cylinder (12V or 24V supply)
- > A safety valve between pressure and return to generate a freewheel and not abruptly stop the saw blade
- > Cylinders equipped with safety valve
- > Flexibles kit supply of the Lamier motor (pressure, return and drain) ending at 1 m from the pruning equipment chassis:
 - ° Female connectors 3/4" BSP for the motor supply
 - ° Female connector 15L for the drain
- > Flexible kit for the selector oil supply ending at 1 m of the pruning equipment chassis
- > Female connectors 10L

To be precise at order: the sides where the hoses come from (big oil flow line, secondary line and drain)

* **Electrical kit** composed of:

- > 1.5 m cable without plug for the power supply of the selector ending at 1 m from the frame of the pruning equipment

* Tools to maintain and to change cutting equipment

* Operation and maintenance manual for the pruning equipment and spare parts manual

Does not include:

- * Flow regulator
- * Hitching bracket between the pruning equipment and the excavator
- * Hydraulic couplers
- * The panel control for the selector
- * The electrical cable and the plugs between the pruning equipment and the cabin

Hydraulic prerequisites on the excavator:

- * Continuous hydraulic oil flow simple effect at the end of the boom of **85 l/min at 150 bar / 75 l/min at 180 bar**
- * This flow must be constant, regardless of the movements of the carrier, and at a forward speed less than 1 km/h
- * Drain to direct return to tank (max. allowable pressure on the drain: 2.5 bar)
- * Hydraulic oil flow line for piloting the cylinders: 12 to 16 l/min at 180 bar

Prerequisites in cabin:

- * A start up button for the pruning equipment
- * An emergency stop button
- * A command to activate the piloting of the line double effect for the movements
- * A panel control and an electrical cable at the end of the boom, for piloting the function selector
- * Electrical signal 24 V (**To be precised at order if you have 12 V**).

Accessories		£
K5F.8508L.02MSC	Kit 5 flexibles lenght 2 m flow 85 L + 8 L + D without couplers	£773
	Hitching bracket (connection between the cutting equipment and the excavator)	